



# Eltex Service Routers: real-world use, tips and tricks

## Speakers:

Ilya Korneev Engineer, Broadband  
Service Center

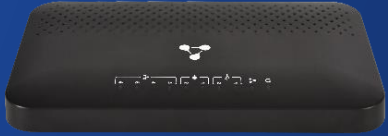
Alexey Maslov Product Manager,  
International Sales Department



# ESR Service Routers Models



## Low-performance routers



### ESR-15

#### Interfaces

4 × 1G  
2 × 1G SFP

#### Performance

FW – 1.53 Gbps c  
IPsec VPN – 267.5 Mbps  
IPS/IDS – 39.5 Mbps

## High-performance routers



### ESR-3250

#### Interfaces

8 × 1G Combo  
4 × 25G SFP28

#### Performance

FW – 56.2 Gbps  
IPsec VPN – 8.3 Gbps  
IPS/IDS – 3.87 Gbps



### ESR-15R

#### Interfaces

4 × 1G  
2 × 1G SFP

#### Performance

FW – 1.5 Gbps  
IPsec VPN – 267.5 Mbps  
IPS/IDS – 39.5 Mbps



### ESR-3350

#### Interfaces

8 × 1G Combo  
4 × 25G SFP28

#### Performance

FW – 106.5 Gbps  
IPsec VPN – 23.6 Gbps  
IPS/IDS – 12.2 Gbps

## Medium-performance routers



### ESR-30

#### Interfaces

4 × 1G  
2 × 10G SFP+

#### Performance

FW – 7.7 Gbps  
IPsec VPN - 884 Mbps  
IPS/IDS – 336.3 Mbps

## Software solution



### vESR

#### Features

L3 functions  
Security  
Private networks

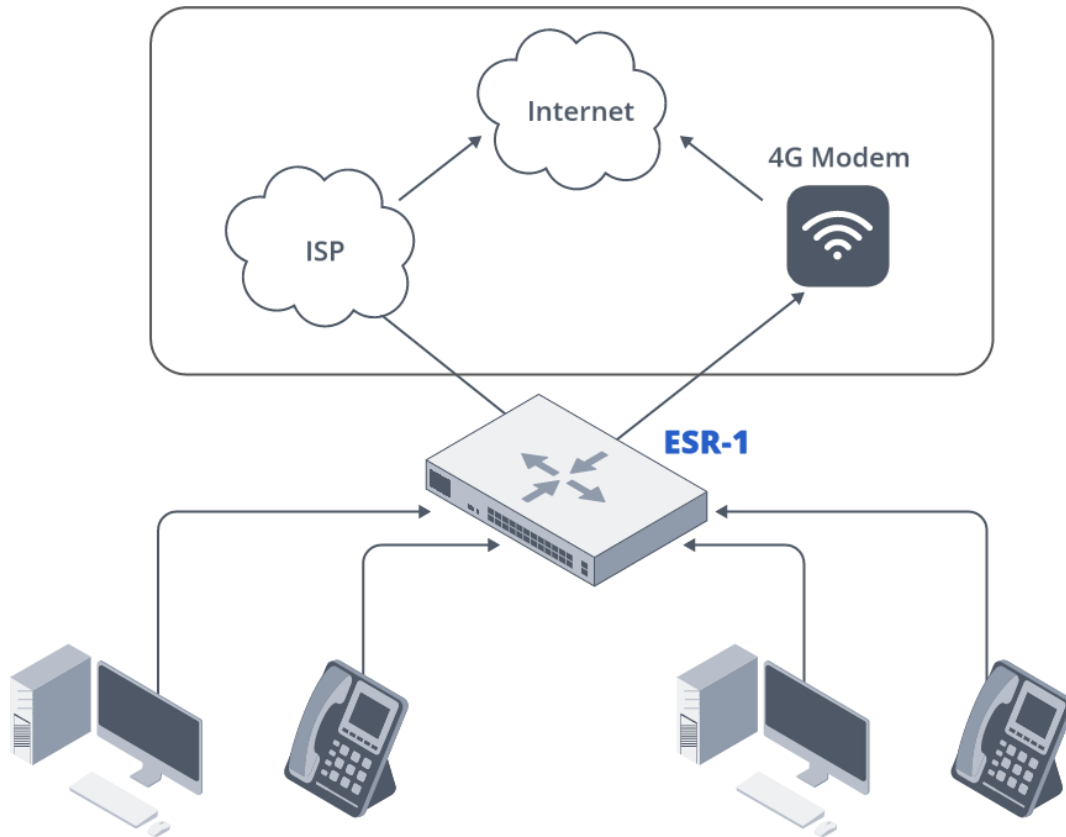
Scalability  
Fault tolerance  
Monitoring

# ESR Service Routers



- Software data routing
- Multiprotocol Label Switching (MPLS)
- Construction of secure network perimeter (NAT, Firewall)
- Intrusion prevention and detection (IPS/IDS)
- Service Level Agreement (SLA)
- Organization of secure network tunnels between different offices of a company
- DMVPN virtual private networking technology compatible with Cisco equipment in three phases
- Remote connection of staff members to an office
- Internet channel management and bandwidth allocation within an office using QoS
- Providing a redundant connection
- Subscriber termination, bandwidth shaping, IPoE BRAS

# Campus network (small size)



## Features

### WAN

- DHCP
- Static IP
- PPPoE / PPTP
- 4G Modem
- Multi-WAN

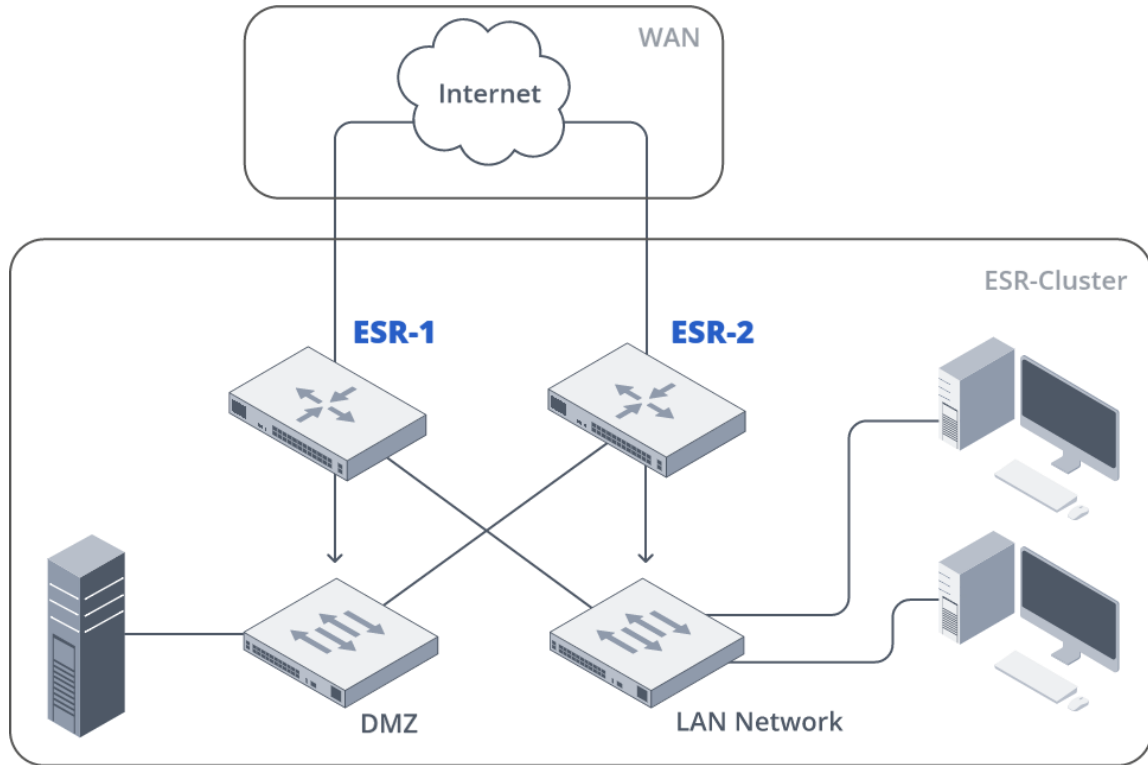
### Management and monitoring

- SSH/Telnet
- SNMP
- NetFlow
- IP SLA
- NMS (ECCM)

### Service

- NAT
- Static and dynamic routing
- Firewall/DDoS-Defence
- QoS
- DHCP and DNS server
- Syslog
- NTP

# Campus network with redundancy and DMZ



## Features

### WAN

- DHCP
- Static IP
- PPPoE / PPTP
- Multi-WAN

### Management and monitoring

- Cluster
- SSH/Telnet
- SNMP
- NetFlow
- IP SLA
- NMS (ECCM)

### Service

- Static and dynamic routing
- Firewall/DDoS-Defence
- NAT
- QoS
- DHCP and DNS server
- Syslog
- NTP

# Distributed office network of a company



## Features (Hub)

### Tunnel

- DMVPN Phase 1, 2, 3
- IPsec

### Management and monitoring

- SSH/Telnet
- SNMP
- NetFlow
- IP SLA
- NMS (ECCM)

### Service

- Dynamic routing
- QoS
- Syslog
- NTP

## Features (Spoke)

### WAN

- DHCP
- Static IP
- PPPoE / PPTP
- 4G Modem
- Multi-WAN

### Tunnel

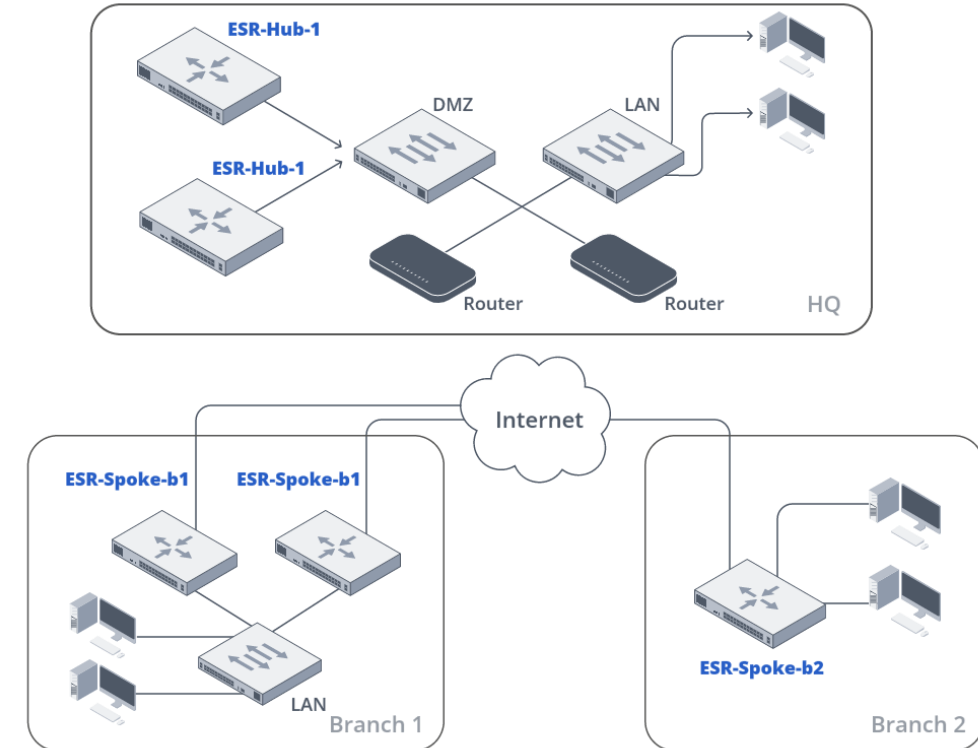
- DMVPN Phase 1, 2, 3
- IPsec

### Management and monitoring

- Cluster
- SSH/Telnet
- SNMP
- NetFlow
- IP SLA
- NMS (ECCM)

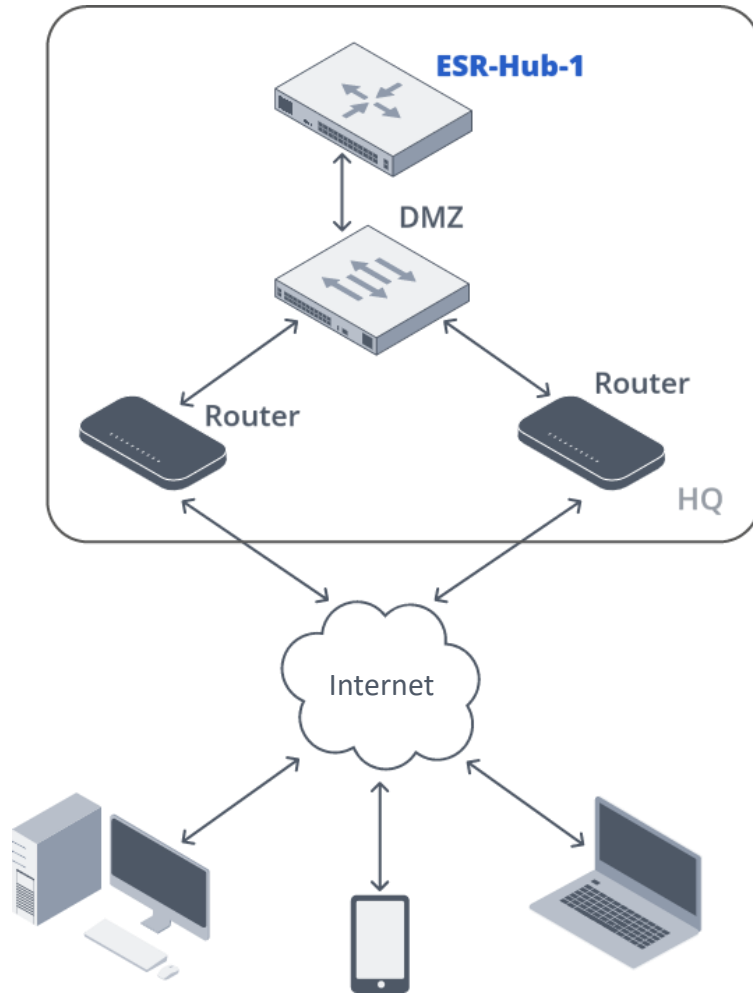
### Service

- Static and dynamic routing
- Firewall/DDoS-Defence
- NAT
- QoS
- DHCP and DNS server
- Syslog
- NTP





# Remote access server



## Key features of remote access devices:

### Support for secure VPN technologies

- IPsec/IKEv2, L2TP/IPsec, GRE over IPsec
- Client-server and site-to-site scenarios

### User and device authentication

Support for X.509 certificates

### Traffic encryption and security

Encryption control according to modern standards

### High fault tolerance

Link redundancy, VRRP, gateway availability monitoring

### Flexible access management

Traffic filtering inside tunnels



# Point-to-Point secure access



## Features (DC)

### Service

- Static and dynamic routing
- QoS
- Syslog
- NTP

### Management and monitoring

- SSH/Telnet
- SNMP
- NetFlow
- IP SLA
- NMS (ECCM)

### Tunnel

IPsec IKEv1 / v2

## Features (Office)

### WAN

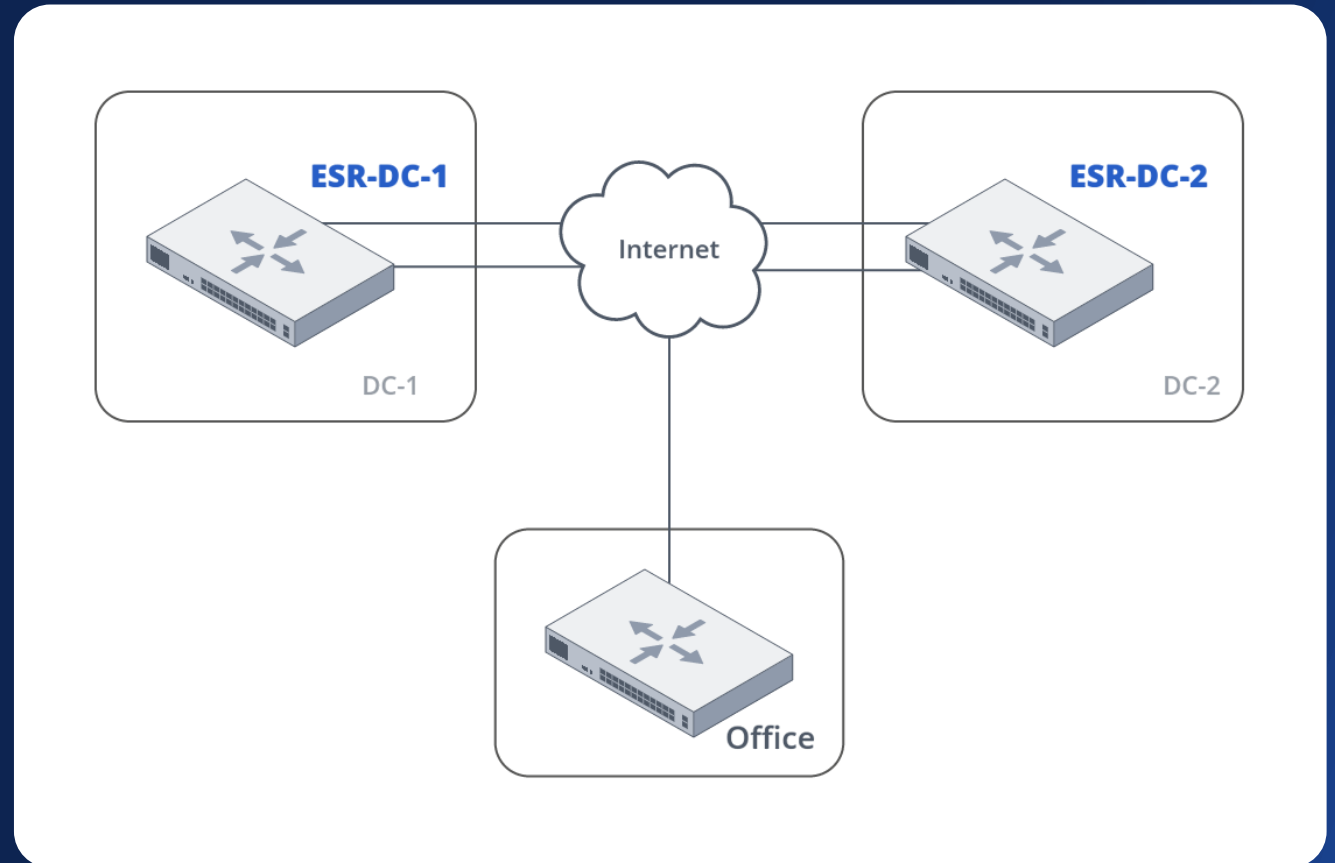
- DHCP
- Static IP
- PPPoE / PPTP
- 4G Modem
- Multi-WAN

### Management and monitoring

- SSH/Telnet
- SNMP
- NetFlow
- IP SLA
- NMS (ECCM)

### Service

- Static and dynamic routing
- QoS
- Syslog
- NTP





# Viable alternatives



**ESR series routers can be alternatives to:**

Cisco ISR  
series

Mikrotik  
soho class

Cisco ASA/  
Firepower series

Juniper SRX  
series





**Q&A**



**LinkedIn**



**Webinars**



**We are always ready to discuss, develop  
and customize products for your needs!**



630020, Russia, Novosibirsk, Okružhnaya street, 29V  
9:00 AM – 6:00 PM (GMT+7)  
Monday – Friday



+7 (383) 274-10-01, 274-48-48  
[eltex@eltex-co.ru](mailto:eltex@eltex-co.ru); [eltex-co.com](http://eltex-co.com)

Eltex Enterprise Ltd. | Russian developer and manufacturer of communication equipment